

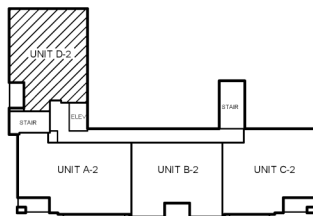
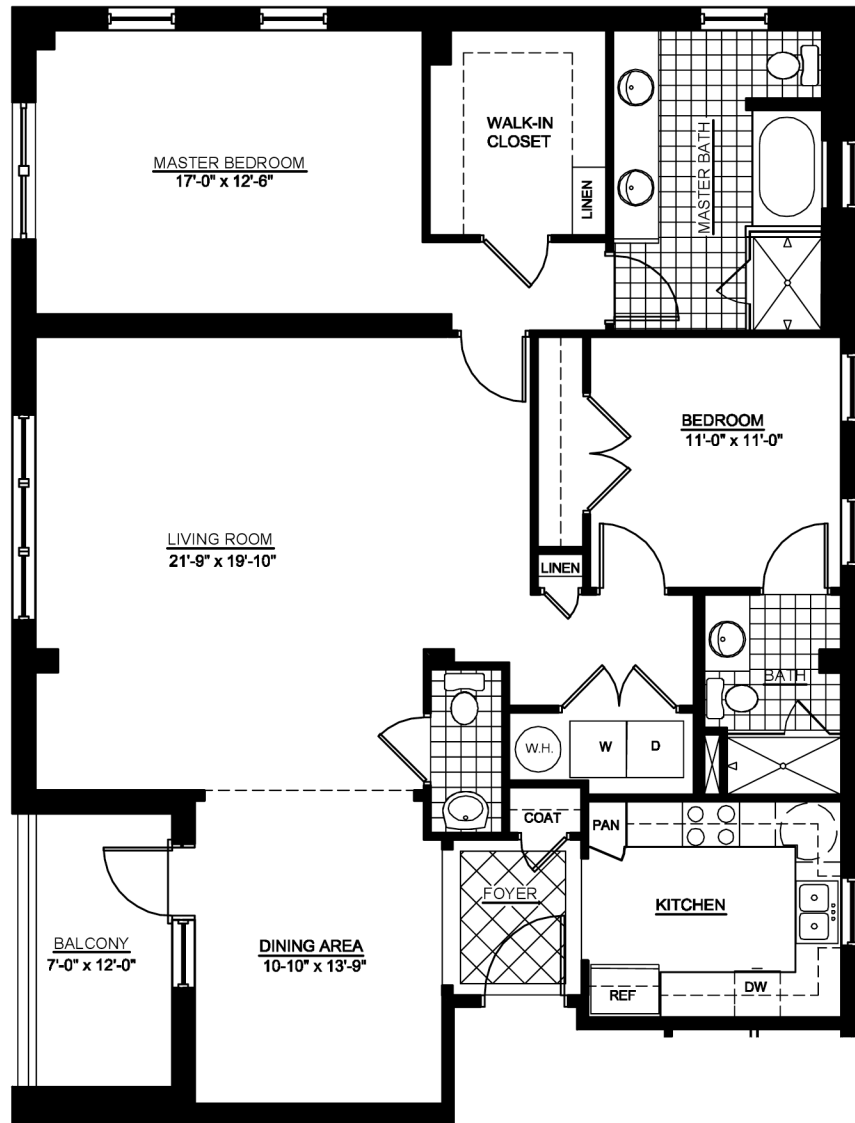
EAST BEACH VILLAS  
 AT  
 PRETTY LAKE  
 A Condominium Community



THE ELIZABETH

4500 Pretty Lake Avenue - Unit D2

(1,648 S.F.)



BUILDING 1 - 2ND FLOOR  
 THE ELIZABETH

4487 PLEASANT AVENUE, NORFOLK, VA 23518 • 757-333-6650 • WWW.EASTBEACHVILLASNORFOLK.COM

Exclusive agent representing the seller. All square footage numbers are approximate. Renderings are artist's conception and not drawn to scale. The Owner and Architect reserve the right to change prices, plans, components and specifications, and to modify, change, revise or amend any plan, without notice or prior approval. Extra cost options and decorator items may be shown in models or in illustrations.

